



LINX



Linx 10 Continuous InkJet Printer

For the first time, a portable CIJ printer you can easily move between lines.

Designed for single shift production, the Linx 10 CIJ Printer provides high quality, two line print onto any dry substrate. With the smallest footprint on the market, you can move it to where you need to code. Size isn't everything though. Code setup is simple, making product changeovers quick and error-free, and a robust design provides you with the high level of reliability you expect from Linx.

Compact and portable

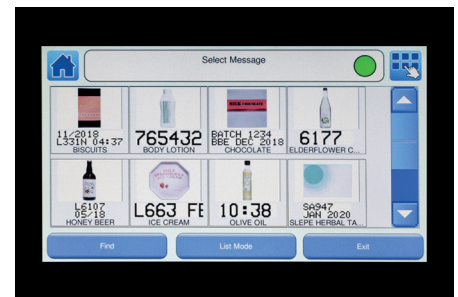
- The Linx 10 occupies a fraction of the space of other CIJ printers, plus it can be fixed directly to your production line, ideal where space is limited
- Its lightweight design, carry handle and printhead dock make it easy to move to where you need to code
- A unique, integrated line speed sensor dispenses with the need for extra equipment, making setup quick, plus it ensures your products are coded at the right time, in the right place.

Truly simple coding and marking

- Color touch screen with icons which are easy to understand – makes code setup and selection truly simple
- Use product imagery to select jobs – for error-free code setup
- Fluids are contained in sealed cartridges, which simply click into place, even during printing – no mess, no tools, no mistakes
- Service the printer yourself quickly using the on-screen instructions, and plan servicing around your production schedules – reduce your downtime.

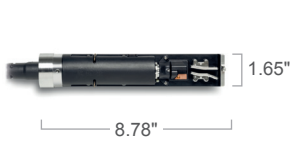
A robust inkjet coding solution at an affordable price

- The printer's stainless steel enclosure has an IP55 rating – suitable for most coding environments
- Linx's industry-leading printhead is completely sealed for continual reliable operation – minimal cleaning required to maintain optimal print quality
- Quick, clean starts every time with autoflush – Linx's automatic printhead cleaning feature. Leave the printer unused for a month and it will still print right first time with no extra cleaning or processes – saving you time and consumables.



Linx 10 Continuous Inkjet Printer

PRINTHEAD



SIDE ELEVATION



TOP ELEVATION



FRONT ELEVATION



Technical Specifications

PRINTING SPEEDS AND SIZES

- Lines of print supported: 2
- Message height range: 0.07" to 0.22"
- Character width range: 0.07" to 0.17"
- Maximum line speed: 1 line 524 ft/min, 2 lines 303 ft/min
- Maximum number of characters per second: 700
- Maximum message length: > 1m
- Recommended distance from printhead to substrate: 0.47"

HARDWARE FEATURES

- Service Module: Easi-Change® Service Module with 2000 hours between scheduled maintenance
- Printhead flushing: Typical cleaning interval 1 month (35 starts and stops)
- Fluid cartridges: Cartridge system with RFID
- Fluid low warning: Up to 2 hours warning from fluid 'low' to 'empty'
- Operation angle: Allows tilt up to +/- 2 degrees in operation. Supports printing from top, side and bottom. Transportation can tolerate 45 degrees
- Mobility: Easy to carry, light weight design that can easily be moved between production lines
- Display: 7 inch, high brightness back-lit, full colour touch screen with tough, solvent resistant polymer cover
- Alerts: Audio indicator of error conditions and screen alarm as a screen saver
- Gear pump: Durable with no scheduled changes required
- Extended shutdowns: Up to 4 weeks possible without printer flushing or draining

SOFTWARE FEATURES

- Step by step message creation and editing
- Single press print start, print pause and printer shutdown
- Password protected functions with custom profiles for secure, mistake-proof operation
- Job selection using real product images
- On-screen help and diagnostics

- Live message preview
- On-screen instructions for changing Service Module, ink and solvent refilling and other functions
- 31 languages
- PrintSync® automatic font and message format, based on style selected and line speed
- Simple line speed and shaft encoder set up wizard, for installation on new production lines
- On-screen keyboards
- Message store and printer settings back up, copy and restore using USB storage device

MESSAGE PRINTING FACILITIES

- Text, symbols and numbers
- Bold character printing (up to 10 times)
- Upper-case and lower-case text
- Rotated character (tower) printing
- Variable character height and width
- Product image message selection
- Graphics and logos can be imported into the printer as Bitmap files using the USB port
- Automatic formats for printing dates and times (using the printer's internal clock)
- Sequential numbering, forward and backward counting, variable intervals
- Automatic date forward function. Add any number of seconds, minutes, hours to the current time, or any number of days, weeks or months to the current date
- Number of messages stored: Up to 1000 using internal printer memory (depending on message content), more can be stored using a USB storage device

PRINTHEAD CHARACTERISTICS

- Nozzle size: 62µm
- Conduit: Flexible and durable dual tube conduit, solvent resistant
- Printhead: Mark 13. Stainless steel cover tube (suitable for use with magnetic and non-magnetic conveyors)

LINX BLACK MULTI-PURPOSE INK L100

- Ethanol/ethyl acetate base with a fast-drying time of 1-2 seconds. Suitable for food packaging applications and meets Swiss Ordinance SR 817.023.21
- Recommended for printing on coated or varnished card, uncoated card and paper, and dry plastics, glass and metals, including aluminium foil
- Storage temperature: 59°F to 77°F. Operating temperature in printer: 41°F to 113°F

CONNECTIONS/INTERFACING

- Product detector
- External 24 volt alarm output
- Optional shaft encoder
- USB port for message and printer settings back up and restore

ACCESSORIES/OPTIONS

- A conveyor mounting bracket
- Carry handle and printhead holder will be available as factory fit option

PHYSICAL CHARACTERISTICS

- Enclosure: Stainless steel
- IP environmental protection rating: IP55
- Mounting options: Conveyor mount, 8900 trolley with Linx 10 adaptor, bench or table
- Operating temperature range: 41°F to 113°F
- Humidity range (relative humidity, non-condensing): 10-90%
- External power supply: 100-230V, 50/60Hz
- Power consumption: 32W (typical while printing)
- Weight (including fluids and printhead): 24 lbs
- Conduit: 1.3m
- Conduit management: Simply fixed in place on printer during transport
- Handle: Optional

REGULATORY APPROVALS

- GS • CE • EAC • NRTL • FCC



Supplied & Supported By:
Carpenter's Time Systems
"Since 1962"
P: 409.838.5391 TF: 409.838.5391
CarpentersTimeSystems.com

